

WALGREENS - DORT & ATHERTON

3753 S. Dort Highway / Flint, MI



MID-AMERICA®
Real Estate-Michigan, Inc.

AVAILABLE NOW



RETAIL OPPORTUNITY

WALGREENS - DORT & ATHERTON



Address

3753 S. Dort Highway
Flint, MI 48507

Availability

14,490 SF

Features

The property is situated on the northeast corner of Dort Highway and Atherton Road in Flint, MI. Walgreens has successfully operated in this location for over 20 years. Located at a traffic controlled intersection with ingress/egress to both main roads and pylon sign on the hard corner, the site offers any retailer a premium opportunity to capitalize on a prominent location with excellent visibility.

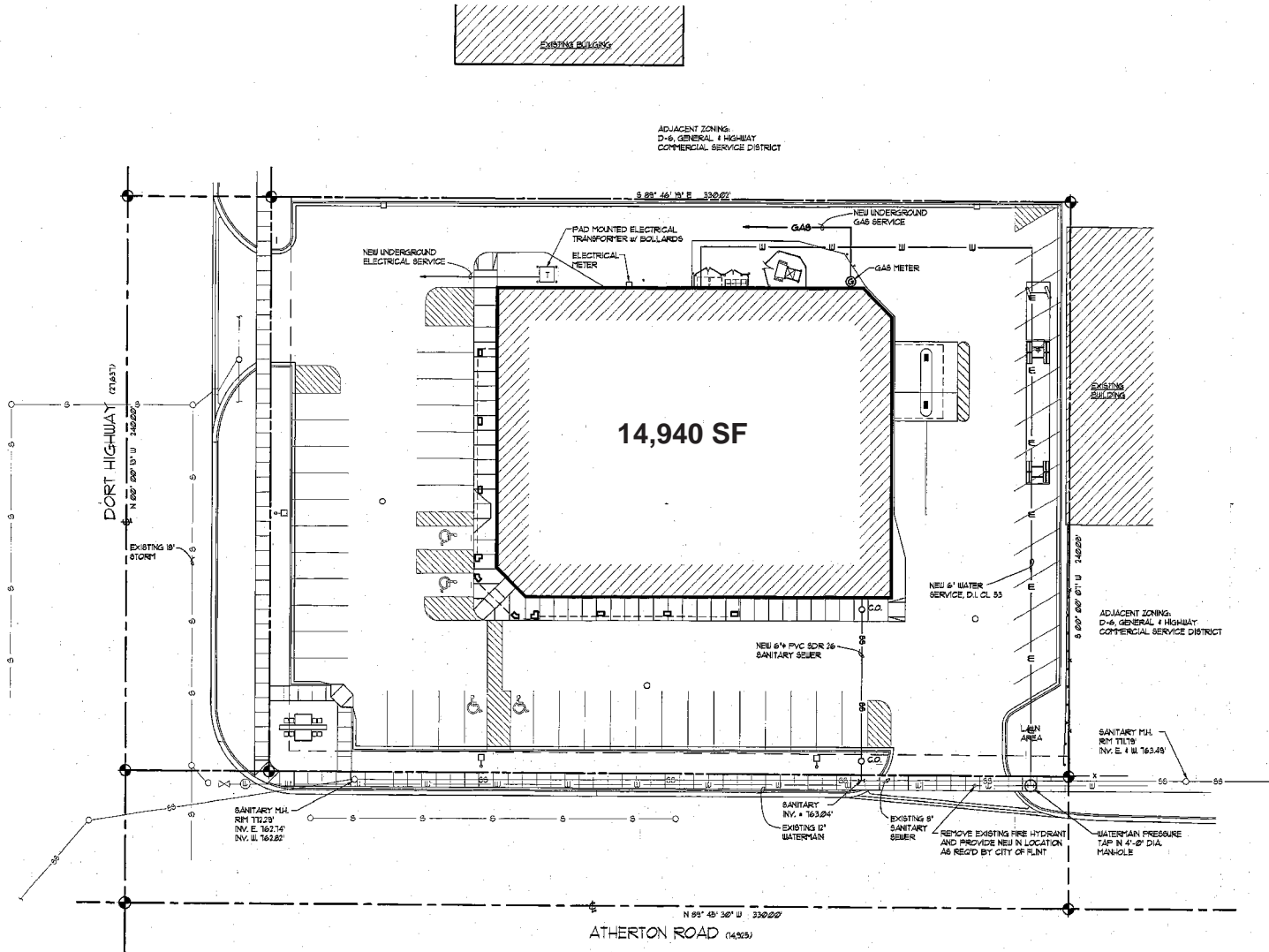
Area Tenants



Demographics

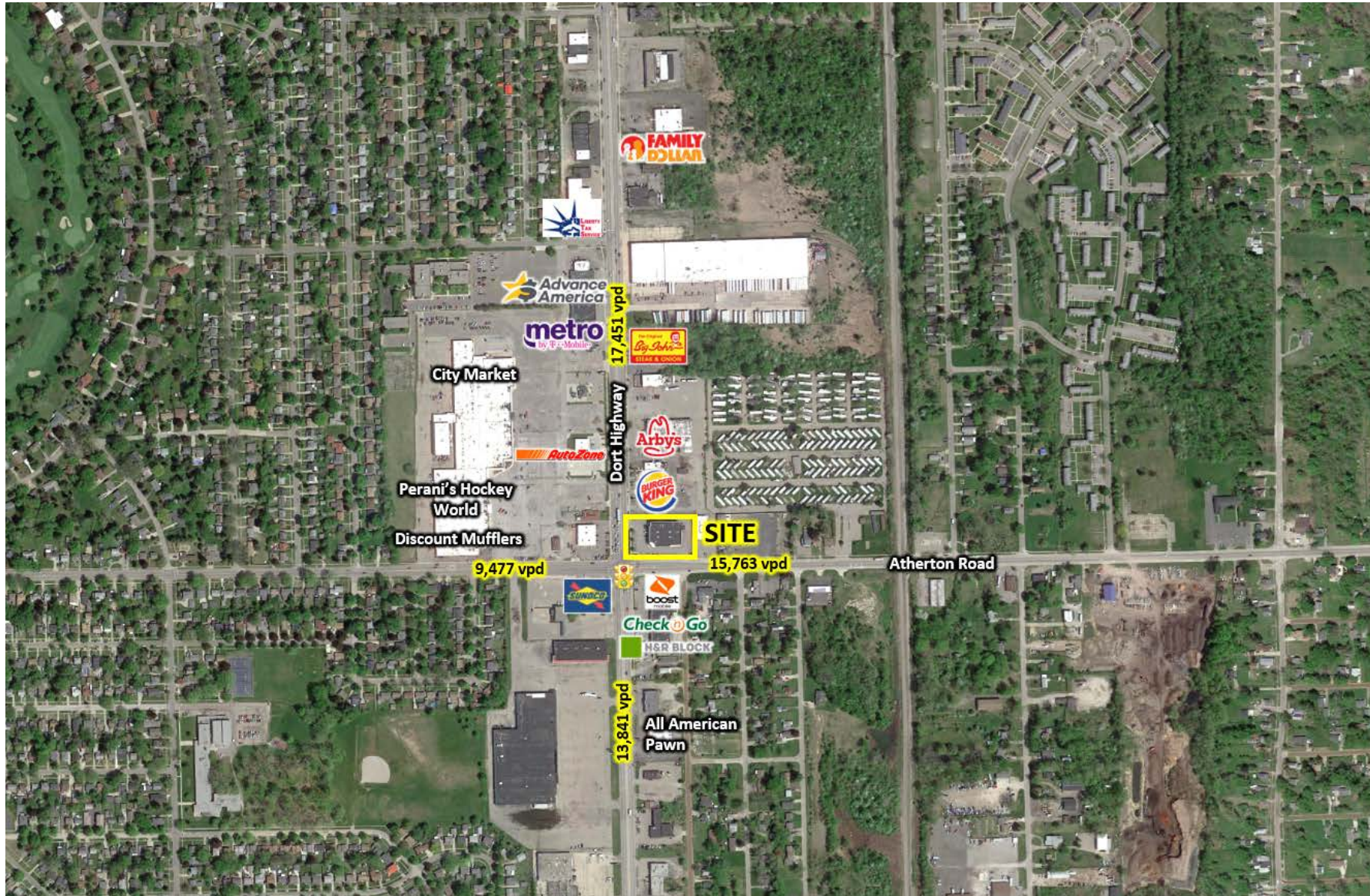
	1 MILE	3 MILES	5 MILES
POPULATION	7,828	58,250	143,502
HOUSEHOLDS	3,085	23,943	58,130
AVG HOUSEHOLD INCOME	\$40,968	\$47,228	\$53,623
DAYTIME POPULATION	8,086	65,704	156,507

WALGREENS - DORT & ATHERTON



SITE PLAN

WALGREENS - DORT & ATHERTON



WALGREENS - DORT & ATHERTON

Eric
Unatin

Mid-America Real Estate -
Michigan, Inc
T: 248.385.5023
EUnatin@MidAmericaGrp.com

Brad
Rosenberg

Mid-America Real Estate -
Michigan, Inc
T: 248.385.5001
BRosenberg@MidAmericaGrp.com



MID-AMERICA[®]
Real Estate-Michigan, Inc.

38500 Woodward Avenue
Suite 100
Bloomfield Hills, MI 48304
248.855.6800
MidAmericaGrp.com



CONTACT